



# Dark Fabric Transfer Instructions



## STOP!

- Please read the complete instructions below
- Visit [Avery.com/transfers](https://avery.com/transfers) for more info, including a How-To video
- Questions? Call us at 800-GO-AVERY (800-462-8379)



Scan to link directly to our How-To video for Avery Dark Fabric Transfers.

Avery Dark Fabric Transfers are designed for dark colored 100% cotton fabric or poly/cotton blend fabric. Visit [avery.com/transfers](https://avery.com/transfers) for design inspiration, templates, how-to videos and variety of tips and tricks. Follow the steps below to ensure great-looking results. *Note that your results may vary based on a variety of factors, including fabric type, ironing equipment, temperatures, and wash methods.*

## Dos & Don'ts of Fabric Transfers:

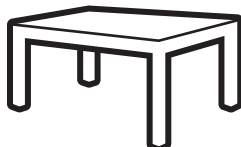
- **Don't** use a laser printer.
- **Don't** use steam in the iron.
- **Don't** use an ironing board, granite, quartz, concrete, plastic or other heat sensitive or heat-retaining surfaces.
- **Do** iron on a heat resistant surface, such as a wooden table.
- **Do** allow the ironing surface to cool completely between transfers or use different areas of your workspace to avoid damage when creating multiple transfers at one time.
- **Do** follow washing instructions before wearing.



## Items Needed:



100% cotton or poly/cotton blend, dark colored fabric



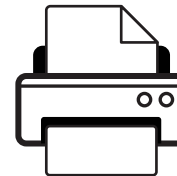
Waist-high smooth heat-resistant surface



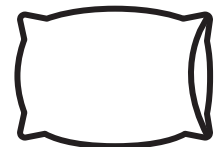
Tissue paper (provided) & scissors or electric die-cutting machine



Household iron or heat press

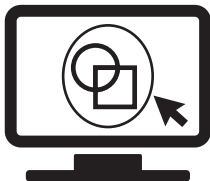


Inkjet printer



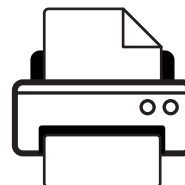
Large cotton pillowcase

## 1. Design & Print



### Design

- Go to [avery.com/templates](https://avery.com/templates) and customize your design, using our free templates and online design tools.
- Note: Dark Fabric Transfers do not require images to be flipped.



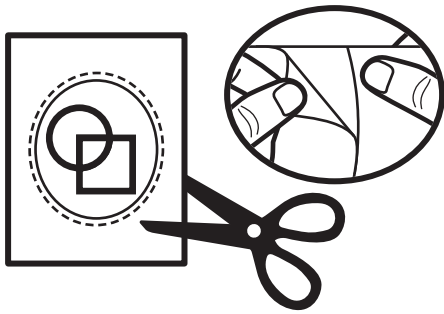
### Print

- Test print your design on plain paper to ensure the design looks accurate.
- Feed one transfer sheet at a time.



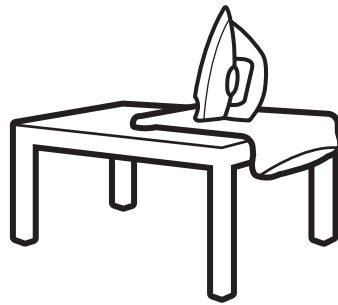
**FOR USE IN INKJET PRINTERS ONLY.**

## 2. Prep & Ironing



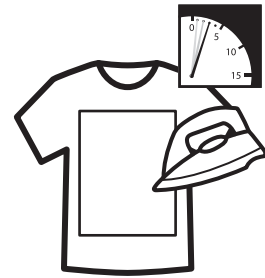
### Trim & Peel Material

- Cut out design leaving a narrow margin around image using scissors or an electronic die-cutting machine.
- Keep edges rounded (if possible) to avoid lifting during ironing and washing.
- Place transfer on flat hard surface with instructions facing up. Peel away the three-piece backing sheet by bending at crease on the top of the sheet to expose a corner of the backing paper. Gently peel each strip from top to bottom, one at a time.



### Prep Workspace

- Place a pillowcase down on a hard, heat-resistant surface; a wooden table is best. (Do not use an ironing board).
- Be sure the iron doesn't have any water in it and the steam setting is turned off.
- Set the iron to the highest setting for your fabric and preheat for 5 minutes.
- Iron the pillowcase and garment to remove wrinkles.
- Use extreme caution when ironing. Avoid leaving iron face-down on the ironing surface for an extended period of time, as it may result in injury or damage to the project or work surface.
- When creating multiple transfers at one time, allow the ironing surface to cool completely between transfers or use different areas of your workspace to avoid damage.



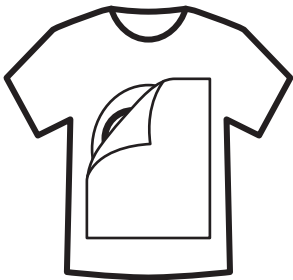
### Ironing

- Place transfer design face up on garment in desired location, cover with tissue paper.
- Apply firm pressure slowly from left to right, top to bottom and each corner, as you iron.
- Turn off iron when finished.
- You may also use a heat press in place of an iron. Set temperature to 325-375°F, press for 30 seconds.

### Ironing Time:

Image Size	Ironing Time
Full sheet	2 minutes
1/2 sheet	1 minute
1/4 sheet	40 seconds

## 3. Finishing & Care



### Finish Transfer

- After ironing, remove your garment from workspace and allow it to cool for 2-3 minutes.
- Slowly peel the tissue paper away from top corner to bottom corner.
- If your transfer begins to lift, iron the image again with tissue paper still in place, focusing on the lifting areas. Let cool once more before attempting to peel again.



### Care & Maintenance

- Wait 24 hours before washing garment.
- Wash garment before wearing:
  - Turn garment inside out and set machine to cold.
  - Use color-safe detergent and wash separately from other clothes. Do not use bleach.
  - Remove promptly, colors may bleed if left wet too long.
  - Tumble dry on the lowest heat setting.
- Do not iron directly on transfer once it has been applied.
- The transferred image is not intended to withstand stretching other than normal wear and tear.